

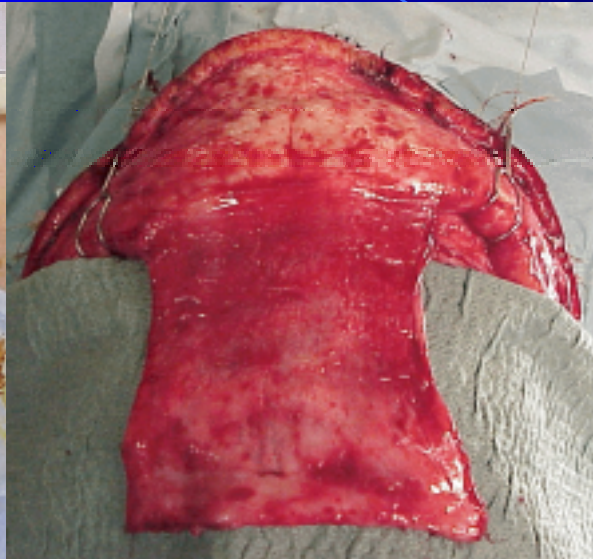
# Tumeurs de l'étage antérieur de la base du crâne

Adénocarcinomes de l'ethmoïde

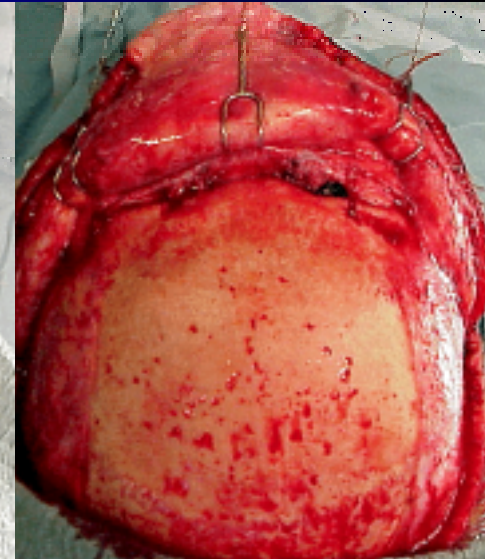
# Technique chirurgicale



**Non rasage,  
Incision bicoronale  
Souttar**

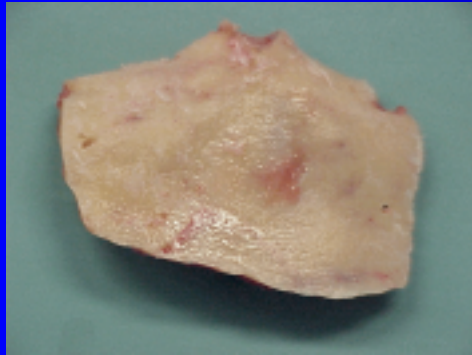


**Prélèvement large lambeau  
pédiculé, vascularisé  
périoste-péricrâne**

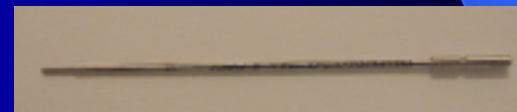


**Exposition rebords  
orbites, région naso-  
frontale**

# Technique chirurgicale

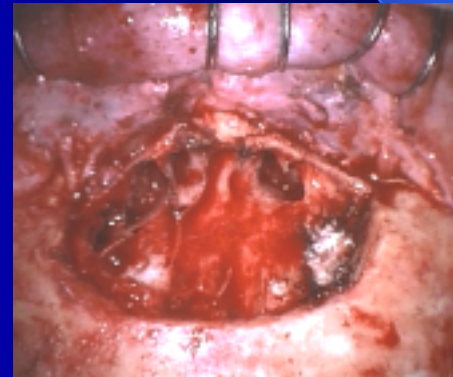
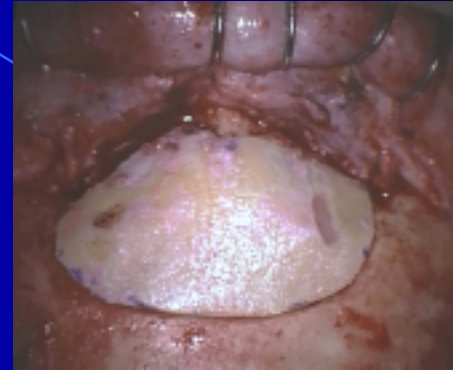
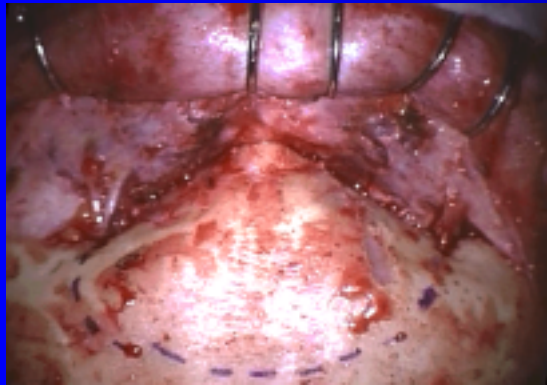


**Dépose paroi  
antérieure sinus**



**Scie oscillante  
mèche foret**

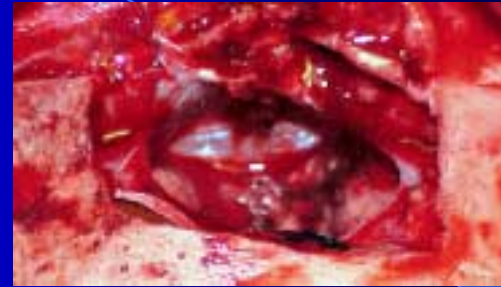
# Technique chirurgicale



# Technique chirurgicale



Exposition durale



Dissection durale base



Ethmoïdectomie



Repose volet