



## UMR CNRS 6042

Bi-site Clermont Ferrand & Limoges

### Physical and Environmental Geography Laboratory (GEOLAB)

PRINCIPAL  
RESEARCH  
TOPICS >

Erosion rate  
Fluvial system  
Palaeoenvironment  
and Geoarchaeology  
Society, Environment  
and Sustainable development

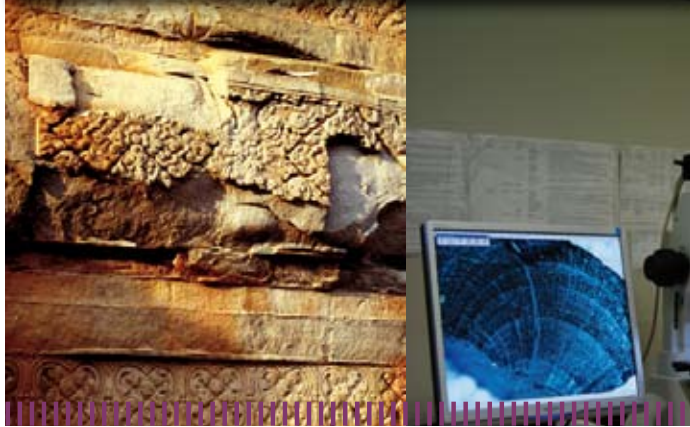
KEYWORDS >

Sustainable development  
Environment  
Geoarchaeology  
Mobility  
Landscape

Suburb  
Geomorphic hazards  
Production systems  
Tourism  
Fluvial territories

# GEOLAB

## Physical and Environmental Geography Laboratory



### EQUIPMENT / TECHNICAL RESOURCES

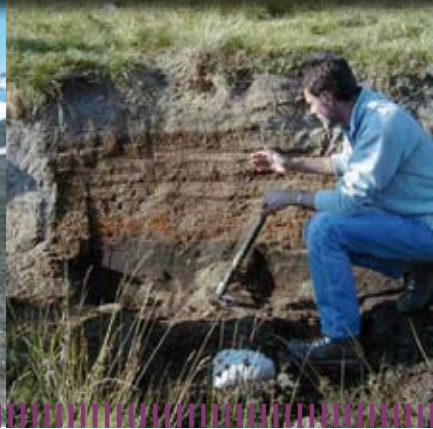
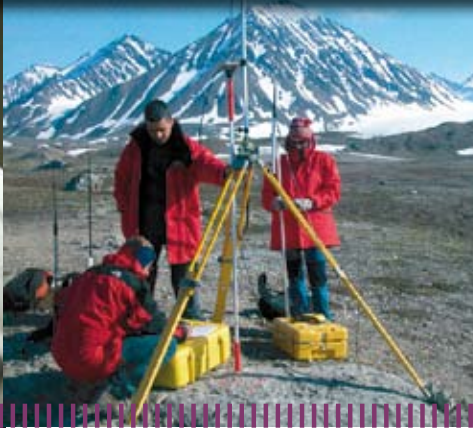
Motor driven carottier  
GPS Trimble  
Episcopic and diascopic microscopes  
Nikon and Leica  
Laser scanning (high resolution  
topography)  
Meteorological station record  
GIS  
Data base softwares  
Remote sensing softwares  
Statistic softwares  
DEM softwares

Geolab research centre, which is funded both by the University and CNRS, is associated with the University of Clermont-Ferrand 2, University of Limoges and INRAP. It is composed of geographers, economists and archaeologists who study interactions between societies and environment. Environment is considered through two complementary approaches:

- ecosystem management (resources, services offered to societies, risks...);
- social and political production which is essential within territorial and societal transformations, at the time of sustainable development.

Research is structured around four thematic research teams:

- Erosion and environmental hazards (climatic changes and paraglacial dynamics, geomorphic signature of coastal crisis, degradation of historical monuments).
- Palaeoenvironment and geoarchaeology (exploitation and management of natural resources during Holocene).
- Dynamics and management of hydrosystems (hydroecology, sediment yield in fluvial and lacustrine systems, changing fluvial landscapes).
- Societies, environment and sustainable development (mobility and sustainable development, production systems, changing landscapes, socio-political management of environment, epidemiology within space and territory contexts).



## OVERVIEW

(as of 30 October 2008)

Instructor-researchers: 27

HDR: 6

Doctoral students in 2008-2009: 18

Doctorates obtained in 2008: 2

ANR projects in progress: 3

Other: 21 national projects in progress

## ECONOMIC ADDED VALUE

(2004-2008)

Creation of a business: VEODIS-3D

## PARTNERSHIPS

### Active national university collaboration:

Universities of: Bordeaux 3, Lyon 2, Paris 1 and Paris 10, Poitiers, Rennes, Toulouse, ULCO

### Current international university collaboration:

South Africa: University of Fort Hare ;

Argentina: National University of Cuyo in Mendoza ;

Spain: universities of Barcelona SERP-UB, of Las Palmas in the Canaries and ICAC of Tarragon;

Indonesia: Gadjah Mada University;

Portugal: universities of Lisbon and Minho;

Sweden: University of Stockholm.

### Scientific interest groups: 1

RAMEAU Resources and development of the waters of the Massif Central

**Physical  
and Environmental  
Geography Laboratory  
(GEOLAB)**

<http://www.flsh.unilim.fr/geolab>

Faculté des Lettres  
et des Sciences Humaines  
39E rue C. Guérin  
87036 LIMOGES  
FRANCE

Tel. (33) (0)5 55 43 55 82  
Fax (33) (0)5 55 43 56 03

**Institutional division**  
Institute of the Science of Man  
and Society (SHS)

**Director UMR**  
Jean-Luc PEIRY  
(Clermont-Ferrand 2)

**Limoges site Director :**  
Philippe ALLEE  
(philippe.allee@unilim.fr)

**SCIENTIFIC PRODUCTION  
OF RESEARCH TEAM  
(2004-2008)**

International articles: 26  
Conference/congress presentations: 146  
Other: 18 published works;  
57 book chapters;  
17 dissertations;  
73 articles in peer-reviewed journals

**Publications and/or major patents over the last 5 years:**

- ROUVELLAC E., Les terroirs du vin de Cahors. Presses Universitaires de Limoges, Limoges, 2005, 254 p.
- STEIGER J., TABACCHI E., DUFOUR S., CORENBLIT D. PEIRY J.-L. Hydrogeomorphic processes affecting riparian habitat within alluvial channel-floodplain river systems: a review for the temperate zone. *River Research and Applications*. 2005, 21, 719-737.
- ALLEE Ph., LESPEZ L. (éd) L'érosion entre Société, Climat et Paléoenvironnement. Presses Universitaires Blaise Pascal, 2006, 480 p.
- DECAULNEA, SAEMUNDSSON TH. Geomorphic evidence for contemporaneous snow-avalanche and debris-flow impact in the Icelandic Westfjords. *Geomorphology* 2006, 80, 80-93.
- PARIS R., LAVIGNE F., WASSMER P., SARTOHADI J., Coastal sedimentation associated with the December 26, 2004 in Lhok Nga, west Banda Aceh (Sumatra, Indonesia). *Marine Geology*, 2007, 238, 93-106.
- ANDRÉ M.-F., ETIENNE S., MERCIER D., VAUTIER F., VOLDOIRE O., Assessment of sandstone deterioration at Ta Keo temple (Angkor): first results and future prospects. *Environmental Geology*, 2008, 56 (3-4), 677-688.
- BEURAIN C. L'écologie industrielle ou comment repenser les modes de production et de consommation. L'exemple du territoire dunkerquois. In *Le développement durable sous le regard des sciences et de l'histoire: de la réflexion aux pratiques éducatives et de formation*, Ed. L'Harmattan, 2008, 275-286.
- BERNARDIE-TAHIR, N. (dir.). *L'autre Zanzibar, géographie d'une contre-insularité*. Paris, Karthala, 2008, 384 p.
- GARNIER E. La reterritorialisation de la population pied-noire ou comment conserver un particularisme culturel et identitaire. In *Espaces en transactions*, Rennes: Presses Universitaires de Rennes, 2008, 279-291.
- GUYOT S. Zulu Shores, South Africa: Green disputes in Black and White, VERLAG DM, Saarbrücken, 2008, 104 p.
- HAUCHART V. Culture du coton, pluviosité et dégradation des sols dans le Mouhoun (Burkina Faso). *Science et changements planétaires, Sécheresse*, 2008, vol 19, 2, 95-102.

